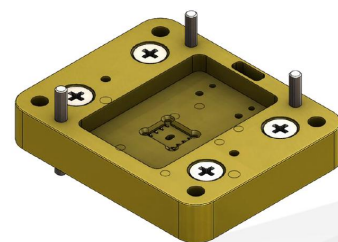
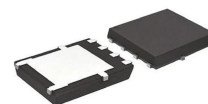
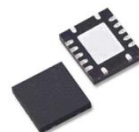


SG2020 IC Test Handler

RPTB for leadless packages



Eletech Inc.

info@eletechsemi.com

SG2020 IC RPTB is designed for leadless packages, supports Ambient and Hot testing with Two or Quad sites. Hipot test sites are also available.



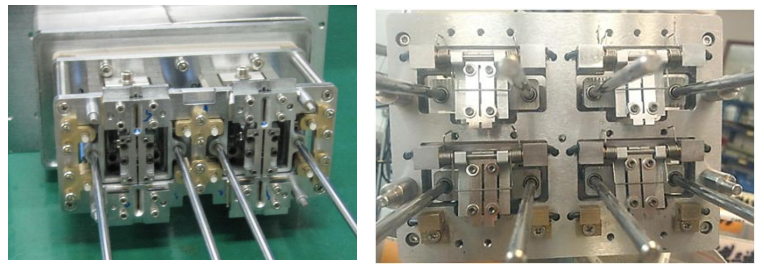
Input option1: Vibration Bowl Feeder



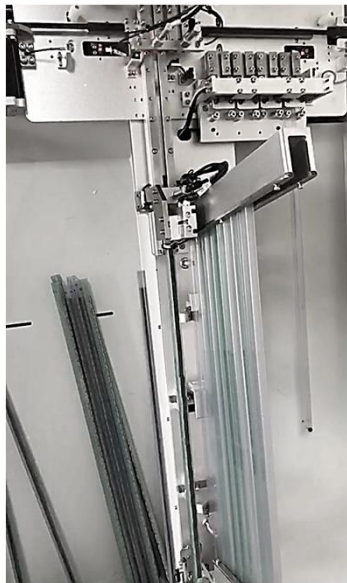
Input option2: Motor-driven Tube feeder



Docking plate



Vacuum plungers



Auto Tube Unloader

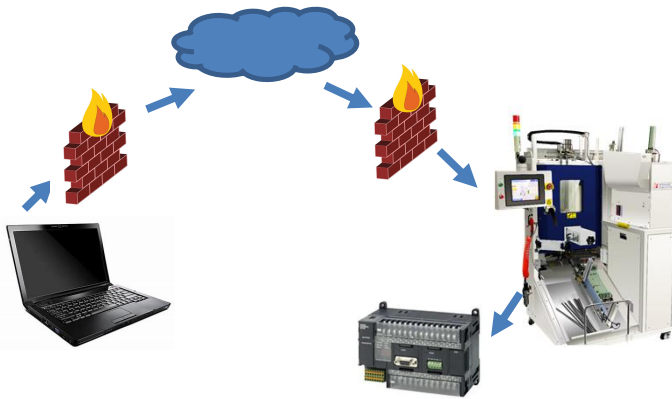


Bulk output

SG2020 is equipped with network function via RJ45 or WiFi connection

Ready for industry 4.0

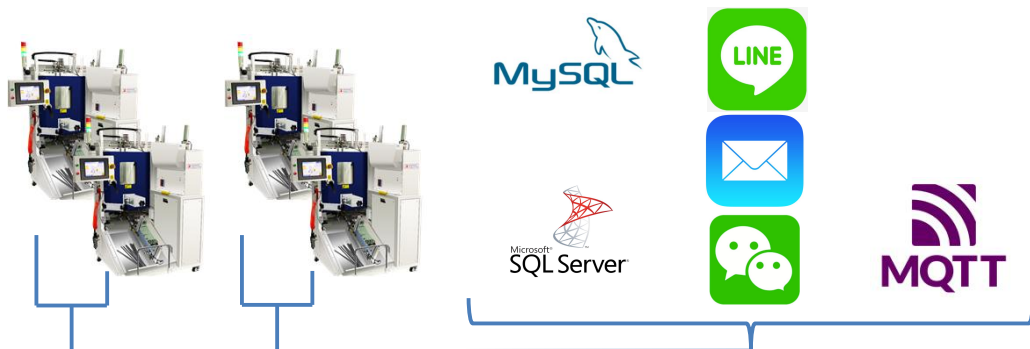
- Production data tracking
- Remote monitoring and assistance
- Supports MySql, SqlServer
- Supports MQTT
- Message/Email alerts
- Supports barcode



Remote system support



Push warning to smart phone



SG2020 System Specifications

Applications

Package Types QFN, DFN, LGA

Package Sizes 3x3 and up

Hipot test Yes (optional)

Test Sites Two or Four

Environment

Temperature Ambient to Hot +155degC

Accuracy +/-2degC at test sites
+/-2degC at soak tracks

Heating Air.
Chamber, sites individual
PID control
Safety cut off at 200degC

Soak time 0-900s with 1s resolution

Soak capacity 498mm per track

User Interface

Display Touch screen GUI (EN/CN)

Network and Data

Connection LAN
WiFi (optional)
LTE (optional)

Database MySql, SqlServer

IIOT MQTT Server supported:
Azure, AWS, Alibaba Cloud

Input/Output

Input

- Tube Auto Loader
- Bowl Feeder

Output

- Tube Auto Unloader
- Bulk

Throughput 6000 UPH (2 sites)
9000 UPH (4 sites)

Index Time 880ms per site

Tester Interface

Interface

- TTL
- RS-232 serial (optional)
- IEEE-488 GPIB (optional)

Test Modes

- Parallel/Synchronous
- Asynchronous
- Alternating/PingPong

Contactors

Socket Type

- Kelvin
- Non-Kelvin
- Hipot

Site pitch Horizontal 60mm Vertical
36mm

Facility requirement

Electrical 220VAC Single phase 50/60Hz

Air supply CDA 0.5MPa

System Dimension

Weight 300Kg

Height 1750mm

Footprint 1100 x 1000mm

